



# PA CARE PARTNERSHIP County Collaborative Monthly Call

Introduction of the PA Care Partnership Team  
August 28, 2018

Please enter your name and email address in  
the chat box.

## Agenda

- Introduction of Staff and Our Roles
- Offerings of the grant
- Questions and Comments
  - ▶ Use the Chat Feature



## Presenters

- Mark Durgin, Project Director
- Monica Walker and Samantha Pulleo
- Kelsey Leonard- Cultural And Linguistic Competence
- Family Staff
  - ▶ Dianna Brocious
  - ▶ Crystal Karenchak
  - ▶ Family Resources
- Youth Staff
  - ▶ Jamal Ford
  - ▶ Youth M.O.V.E. PA
    - Corey Ludden and Zach Karenchak
- Social Marketing
- Family Peer
- Learning Community Counties



## Mark Durgin, Project Director Roles and Responsibilities

Email: [durginm@upmc.edu](mailto:durginm@upmc.edu)

- Oversees the day to day operations of PA Care Partnership;
- Leads the county engagement objectives for the Partnership;
- Co-Chair of the PA Community of Practice on Mental Health;
- First Point of contact for Counties who are interested in System of Care;
- Oversees funding related to grant activities and budgets for Counties;
- Coordinates and engages with evaluation activities for the Counties and the states;
- Oversees contracts and activities with outside trainers to provide training and education at the county and state level as related to the grant.

# PA CARE PARTNERSHIP: DEVELOPING SYSTEMS THAT CARE

## Meet the Evaluation Team!

### Monica Walker Payne – Evaluation Director

- Training and technical assistance
- Supervision
- Data presentations

### Samantha Pulleo – Systems Analyst

- Project management, training, technical assistance and iDashboards creation

### William McKenna – Database Manager

- Data management and quality assurance

### Eileen Domin – Assistant Evaluation Coordinator

- Participant Payments
- Data entry

### Ashley Baker – Assistant Evaluation Coordinator

- Interview Coordination and Reminders
- Data entry

### Ed McKenna – Family Member Interviewer

- Interviewer to collect data from enrolled youth and caregivers
- York, Carbon, Monroe, and Pike Counties

### Michele Penner – Interviewer

- Interviewer to collect data from enrolled youth and caregivers
- Crawford County

# PA CARE PARTNERSHIP: DEVELOPING SYSTEMS THAT CARE

Evaluation training, interviews, data entry, and continuous quality improvement (CQI) dashboards will be provided by our Central Evaluation Team.

We will enter data into our local database as well as the national SAMHSA (SPARS) database and National Evaluation (CMHI Portal) and prepare evaluation information for SAMHSA progress reports.

Any data-related questions can be directed to our team for support and technical assistance – no question is too big or small, we are happy to help!

# Local Data Collection

In addition to helping you collect and effectively utilize the data from the SAMHSA requirements, it is our goal to also provide assistance collecting meaningful local data that aligns with your county goals and priorities.

- Identify surveys and assessments used by other communities around particular topics of interest
- Help design qualitative data collection strategies (interviews, focus groups, community cafes, etc.)
- Provide strategies for using public county, state, and national data in your leadership committees to spark discussion and planning

## **Kelsey Leonard, Cultural and Linguistic Competence Roles and Responsibilities**

Email: [leonardkt@upmc.edu](mailto:leonardkt@upmc.edu)

- Provide training and technical assistance in the area of cultural and linguistic competence;
- Provide consultation to grants and counties regarding cultural and linguistic needs of transition age youth and young adults;
- Works with counties to screen and identify county cultural and linguistic needs and works with the county to develop plans to address need;
- Able to provide education and outreach strategies and partner with cultural and community leaders and organizations;
- Works with counties on individual basis to address their cultural and linguistic needs.





## Dianna Brocious, Family Involvement Specialist

### Roles and Responsibilities

Email: [pasocdianna@gmail.com](mailto:pasocdianna@gmail.com)

- Represent family voice and the PA CARE PARTNERSHIP at meetings and organizations that relate to the current System of Care Cooperative Agreement;
- Technical Assistance provider to Counties, Systems, Providers, and Family members who are developing capacity for family involvement as well as System of Care values and principles;
- Technical assistance on organization and facilitation of family member meetings, educational opportunities and/or events (such as Family Member Road Map, leadership and advocacy, and other trainings from a lived experience point of view);
- Gather resources for family members in all counties of Pennsylvania;
- Provide staff support to PA Families Inc.

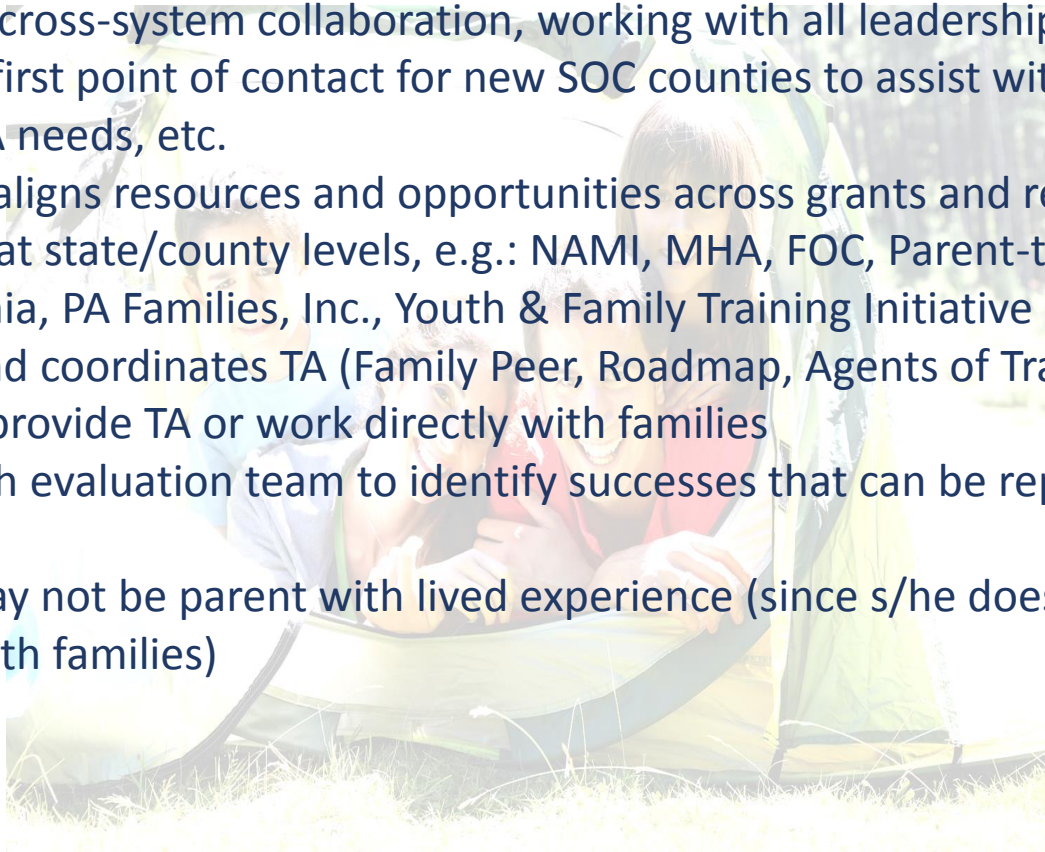
## Crystal Karenchak, Family Policy and Engagement Consultant Roles and Responsibilities

Email: [karenchakcm@upmc.edu](mailto:karenchakcm@upmc.edu)

- Collaboration with organizations and programs in the Family Peer Specialist service and the practice model;
  - ❖ Family Peer work includes: Program development for organizations employing Family Peer; Scope of services, consultation on regulations, policy, definitions of services and practice from a family perspective; Practical aspects of implementation from a family perspective; Marketing and education to family, systems and providers, and Father engagement;
- Work with and provide a family perspective to the Office of Mental Health and Substance Abuse Services (OMHSAS), Bureau of Policy, Planning and Program Development.
- Develop and work with a varied group of family members to provide additional family voice and input on policy and state initiatives at the direction of OMHSAS- Assure that family representation reflects the diversity of Pennsylvania's population;
- Serves as a contact and focused Technical Assistance provider to Counties, Systems, Providers, and Family members on System of Care values and principles.

## To Be Determined, Family Resources Coordinator Roles and Responsibilities

- Promotes cross-system collaboration, working with all leadership
- Serves as first point of contact for new SOC counties to assist with resources, identify TA needs, etc.
- Links and aligns resources and opportunities across grants and related programs at state/county levels, e.g.: NAMI, MHA, FOC, Parent-to-Parent, AFN, Philadelphia, PA Families, Inc., Youth & Family Training Initiative
- Brokers and coordinates TA (Family Peer, Roadmap, Agents of Transformation). Does not provide TA or work directly with families
- Works with evaluation team to identify successes that can be replicated across the state
- May or may not be parent with lived experience (since s/he does not work directly with families)



## Jamal Ford, Youth Resources Coordinator Roles and Responsibilities

Email: [Fordj3@upmc.edu](mailto:Fordj3@upmc.edu)

- Promotes cross system collaboration
- Serves as first point of contact for new SOC counties to assist with resources, identify TA needs, etc.
- Aligns resources and opportunities across grants and programs at state and county level
- Brokers and coordinates technical assistance
- Works with Evaluation team to identify the successes that can be replicated across the state

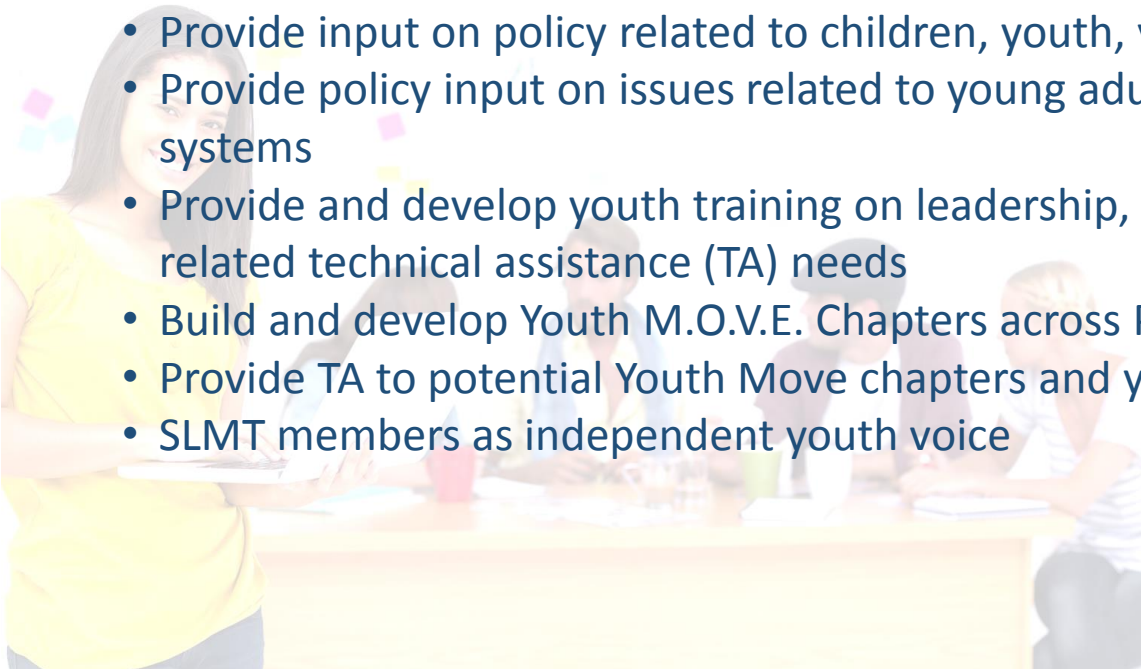


# PA CARE PARTNERSHIP: DEVELOPING SYSTEMS THAT CARE

## Zack Karenchak and Corey Ludden, Youth M.O.V.E. PA Roles and Responsibilities

Email: [Corey@youthmovepa.org](mailto:Corey@youthmovepa.org) and [Zack@youthmove.pa.org](mailto:Zack@youthmove.pa.org)

- Provide input on policy related to children, youth, young adults
- Provide policy input on issues related to young adults entering adult services and systems
- Provide and develop youth training on leadership, engagement, and other youth related technical assistance (TA) needs
- Build and develop Youth M.O.V.E. Chapters across Pennsylvania
- Provide TA to potential Youth Move chapters and young adult leadership
- SLMT members as independent youth voice



# PA CARE PARTNERSHIP: DEVELOPING SYSTEMS THAT CARE

## Nancy Massey, Communications Contractor Roles and Responsibilities

Email: [durginm@upmc.edu](mailto:durginm@upmc.edu) for contact information

- The Communications Contractor provides social media marketing and communication to educate concerning the needs of children and youth with serious mental health diagnoses with the purpose of showing their needs are best met through systems of care.
- Assist in the development of news releases, PSAs, op-ed articles, etc., as requested.
- Provide graphic design support as needed and coordinate the design and production of print materials.
- Consultant will be available to assist in website updates as needed.
- The Communications Contractor has the ability to work with Partnership to develop a social media marketing campaign and calendar.
- The Communications Contractor participates in the Social Marketing Sub-Committee as a member to understand the work being completed and build recommendations from this group.
- Provide guidance and support to Partnership for a weekly email blast on a rotating schedule of topics.



# PA CARE PARTNERSHIP: DEVELOPING SYSTEMS THAT CARE

## Jill Santiago, FAMILY PEER SPECIALIST COORDINATOR

### Roles and Responsibilities

Email: [santiago@upmc.edu](mailto:santiago@upmc.edu)

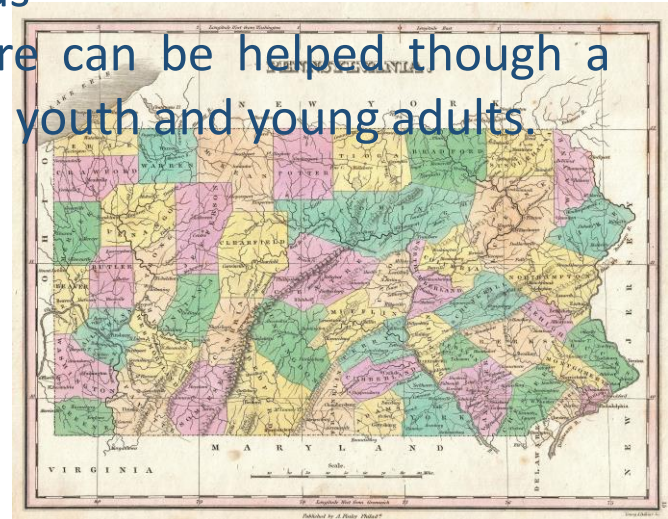
- Works for the Youth and Family Training Institute and provides trainings in collaboration with the Partnership
- Provide Family Peer Specialist trainings and Family Peer Supervisor Trainings;
- Provides technical assistance, training, and resources that support the growth and development of the Family Peer Specialist initiatives;
- Coordinate the provision of the Family Peer Specialist training across the Commonwealth;
- Is the key contact for the training and trainer database with relevant information training and trained Family Peers;
- Family member with lived experience.



# PA CARE PARTNERSHIP: DEVELOPING SYSTEMS THAT CARE

## County Learning Communities- Crawford and York Roles and Responsibilities

- 12 years of combined experience implementing SOC in County Government
- Lessons learned from integration with other SAMHSA Grants
- Support from a County to County approach on System of Care
- Planning process and service evaluation at county level
- Experienced to provide support, guidance, and assistance in implementing values and standards
- Youth and family at all levels care can be helped though a focus on services to the high-need youth and young adults.





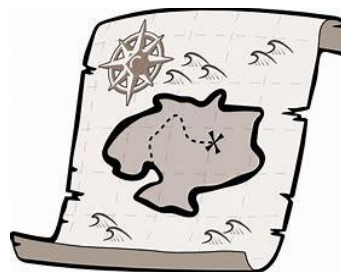
## Young Adult Road Map

- A practical, step-by-step guide and curriculum designed to enable strategic thinking by young adults facing complicated life challenges (such as any behavioral, developmental or special health needs).
- A five-point *Guiding Star* method enables young adults to break down life's big messy situations into manageable tasks, find information and build supportive relationships.
- Review points are designed for use in classroom, support group, therapeutic, and case management environments.
- 16-page Activities Booklet contains worksheets or learning games for used with each chapter. A glossary is included.
- Youth MOVE staff provide coaching and training.



## Family Adult Road Map

- The Family Road Map aims to make the lives of families (and those who serve families) easier by providing a step-by-step process for breaking down problems into manageable parts and finding the supports and services to meet unique needs.
- The Family Road Map Guide and curriculum contain family-tested tips and strategies built around the five points of the Guiding Star. These five navigation skills that work for EVERY system. Programs change, People in agencies change, procedures change—but the Guiding Star, like the North Star, doesn't change. It keeps a family on track regardless of what services they need.



## Trauma Informed Training Workshops

- Maximum of 50 participants per workshop.
- Workshops are held in your community and provided by Lakeside Global.
  - ▶ Trauma 101: An Overview of Trauma-Informed Care
  - ▶ Trauma 102: Basic Skills of Trauma-Informed Care
  - ▶ Trauma 103: Recognizing Vicarious & Secondary Trauma for Caregivers
  - ▶ Trauma 105: An Introduction to Trauma for Parents & Caregivers
  - ▶ Trauma 106: An Introduction to Trauma for Youth
- Taking reservations for training in your community now.  
Contact [info@pacarepartnership.org](mailto:info@pacarepartnership.org) for more information



## Trauma Informed Enhanced Training

- Maximum class size varies from 12 to 15 participants.
- 15 to 30 hours per course
- Workshops may be held in your community, Philadelphia and virtually and provided by Lakeside Global.
  - ▶ Enhancing Trauma Awareness (15-hour course)
  - ▶ Deepening Trauma Awareness (30-hour course)
  - ▶ Applying Trauma Principles (30-hour course)

## Question Persuade Refer (QPR)

- An evidence-based “gatekeeper” training on suicide prevention. Gatekeepers can be anyone, including parents, friends, neighbors, teachers, nurses, etc. in a position to recognize a crisis and/or warning signs in someone that may be thinking about suicide. The gatekeeper learns to recognize early suicide warning signs, question their meaning to determine suicide intent or desire, persuade the person to accept or seek help, and refer the person to appropriate resources. QPR is an evidence-based training that has been recognized by SAMHSA and the Suicide Prevention Resource Center (SPRC).



## Youth Mental Health First Aid

- Youth Mental Health First Aid® USA is in-person training program — like traditional First Aid or CPR — designed to give participants who interact with young people the skills to help adolescents age 12-18 who are developing a mental health problem or experiencing an emotional crisis. The course uses role-playing and simulations to demonstrate how to recognize and respond to warning signs and connect young people to professional, peer, social, and self-help care. Participants do not learn to diagnose, nor how to provide any therapy or counseling – rather, they learn to support a youth by applying a five-step action plan.




## Additional Training

- Youth and Family Engagement
- Developing County Leadership
- Coach Approach to Leadership- Staff leadership training to improve effective communication.
- First Episode Psychosis- Training in planning
- County Leadership/ Governance Board Development
- For more information on training options:  
<https://www.pacarepartnership.org/community-partners/>

# PA CARE PARTNERSHIP: DEVELOPING SYSTEMS THAT CARE


## PA CARE Partnership Home Page

[Contact Us](#) [Select Language](#) [LOGIN](#)

 **pennsylvania**  
CARE PARTNERSHIP  
DEVELOPING SYSTEMS THAT CARE

[f](#) [t](#) [q](#)


[ABOUT US](#) [YOUTH PARTNERS](#) [FAMILY PARTNERS](#) [SYSTEMS PARTNERS](#) [TRAINING](#) [RESOURCES](#) [EVALUATION](#)



### Family Voice Matters

Families on the MOVE

[CLICK HERE FOR MORE INFORMATION](#)



Welcome to the Pennsylvania Care Partnership



# PA CARE PARTNERSHIP: DEVELOPING SYSTEMS THAT CARE

## PA CARE Partnership Training Page

[Contact Us](#)[Select Language](#)[LOGIN](#)[ABOUT US](#)[YOUTH PARTNERS](#)[FAMILY PARTNERS](#)[SYSTEMS PARTNERS](#)[TRAINING](#)[RESOURCES](#)[EVALUATION](#)

## TRAINING

[Home](#) [TRAINING](#)

### Welcome to the PA Care Partnership Training Page

The PA Care Partnership offers a various trainings from staff and contracted partners with a focus on trainings being provided by persons with lived and relatable experience when working with youth and family. The Partnership also contracts with top experts and training entities in the field.

We continue to look for new training opportunities to provide to our youth family and system partners throughout the Commonwealth. If you have a suggested training or request, email us @ [Info@pacarepartnership.org](mailto:Info@pacarepartnership.org)

Our trainings are divided into three sections, and by clicking below you can review the different trainings developed for Youth, Family, and System Partners.

[Youth and Young Adult Training and Technical Assistance](#)

[Family Training and Technical Assistance](#)

[County and System Partners Training and Technical Assistance](#)

[Trauma Informed Training \(Contracted and Provided by Lakeside Global\)](#)



# PA CARE PARTNERSHIP: DEVELOPING SYSTEMS THAT CARE

## PA CARE Partnership Resources Page

[Contact Us](#)[Select Language](#)[LOGIN](#)

**pennsylvania**  
CARE PARTNERSHIP  
DEVELOPING SYSTEMS THAT CARE

[ABOUT US](#)[YOUTH PARTNERS](#)[FAMILY PARTNERS](#)[SYSTEMS PARTNERS](#)[TRAINING](#)[RESOURCES](#)[EVALUATION](#)

## RESOURCES

[Home](#) [RESOURCES](#)

### Training

- Youth Training and Technical Assistance
- Family Training and Technical Assistance
- System, County, and Provider Training and Technical Assistance

### Tools

- SOC Standards
- Family Resource Guides
- PA Care Partnership Toolkit

### Websites for Related Topics

- SAMHSA
- Trauma Informed Care- Samhsa
- Trauma and Violence
- The National Resource Center for Mental Health Promotion and Youth Violence Prevention



**pennsylvania**  
CARE PARTNERSHIP  
DEVELOPING SYSTEMS THAT CARE

# PA CARE PARTNERSHIP: DEVELOPING SYSTEMS THAT CARE

## PA CARE Partnership Toolkit Page

[Contact Us](#)[Select Language](#)[LOGIN](#)

**pennsylvania**  
CARE PARTNERSHIP  
DEVELOPING SYSTEMS THAT CARE

[ABOUT US](#)[YOUTH PARTNERS](#)[FAMILY PARTNERS](#)[SYSTEMS PARTNERS](#)[TRAINING](#)[RESOURCES](#)[EVALUATION](#)

### TOOLKIT FOR THE PA CARE PARTNERSHIP

#### SYSTEM OF CARE GUIDES AND MANUALS

- SAMHSA Building a System of Care Primer 2nd Edition by Sheila A. Pires
- SAMHSA ToolKit for Expanding the System of Care Approach Prepared by Beth Stroul, M.Ed.; Joan Dodge, PhD.; Sybil Goldman, M.S.W.; Frank Rider, M.S.; and Robert Friedman, Ph.D.
- Return on Investment In System of Care (2014 Stroul, Pires) (912KB)
- Technical Assistance to Promote Service and System Change (1MB)
- Lesson Learned for Expanding Systems of Care-Analysis of the System of Care Expansion Planning Grant (684KB)
- Coverage of Behavioral Health Services for Children, Youth and Youth Adult with Significant Mental Health Conditions (164KB)
- Return on Investment Issues Brief (792KB)

#### PA CARE GRANT REPORTING FORMS

- TRAC IPPS Expansion & Sustainability Quarterly Worksheet (xls)
- TRAC IPPS Expansion and Sustainability Quarterly Worksheet (PDF) (117KB)
- TRAC IPPS Cheat Sheet 2018
- Monthly Reporting Narrative
- Meeting Sign In Sheet 2018
- Meeting Sign In Sheet Definitions 2018



**pennsylvania**  
CARE PARTNERSHIP  
DEVELOPING SYSTEMS THAT CARE

- Next Webinar
  - ▶ Tuesday, September 25, 2018
  - ▶ **Principle II: Multi System Integration**
    - Integrated serving systems ensures that services and supports are integrated at the system level, with linkages between child and transition aged serving agencies and programs across administrative and funding boundaries and mechanism are established for system-level management, coordination, and integrated care management.
    - Review of how this is measured
    - Discussion of current county work
- To Register go to:  
<https://www.pacarepartnership.org/county-collaborative-registration>

- Questions
- Comments
- Suggestions



# PA CARE PARTNERSHIP: DEVELOPING SYSTEMS THAT CARE



For more information please  
email us at

[info@pacarepartnership.org](mailto:info@pacarepartnership.org)